

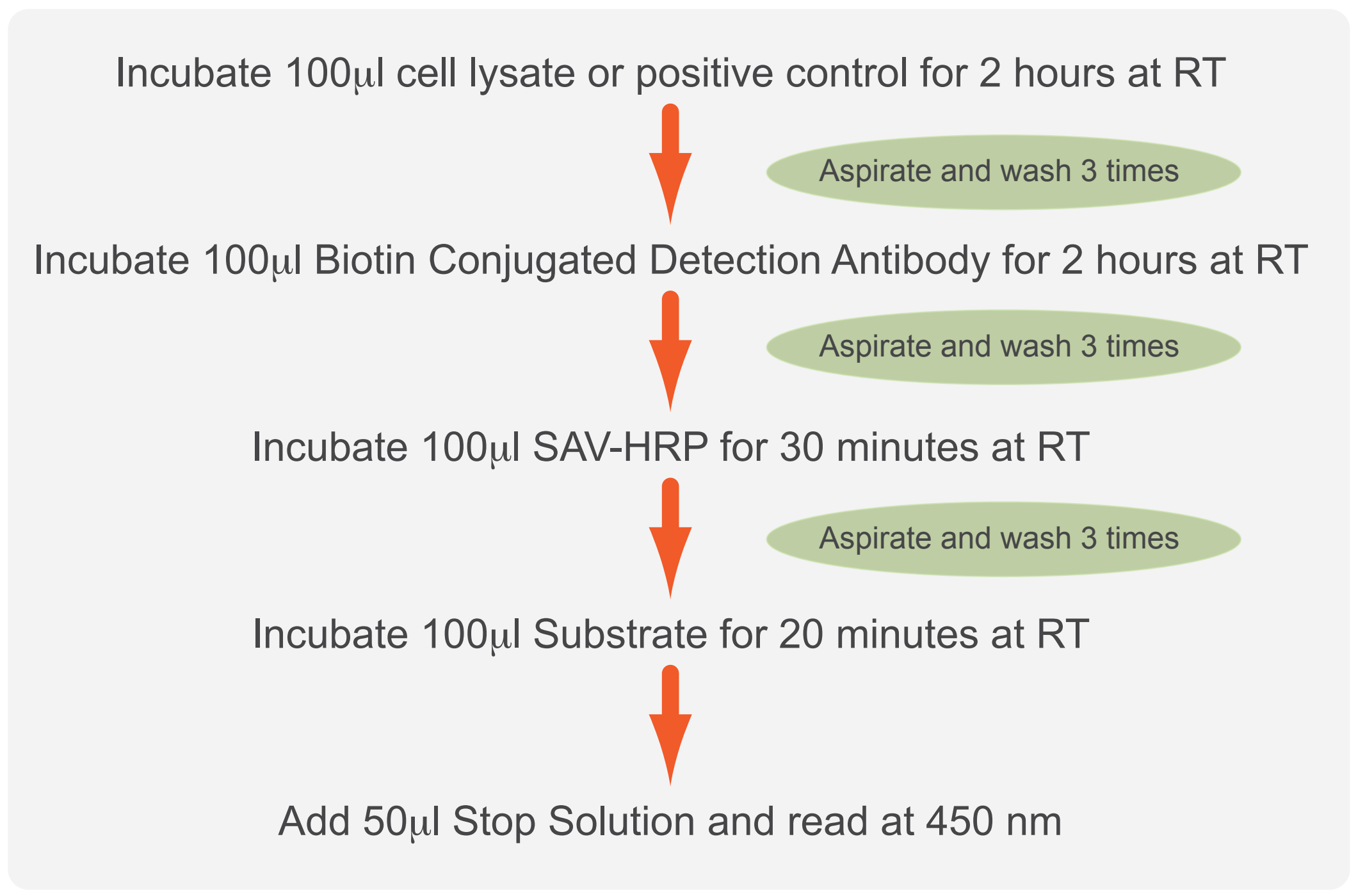
MULTI-KINASE ELISA ARRAY

NEW FROM SYMANSIS

MIX AND MATCH YOUR OWN ARRAY - RESULTS WITHIN 5 HOURS

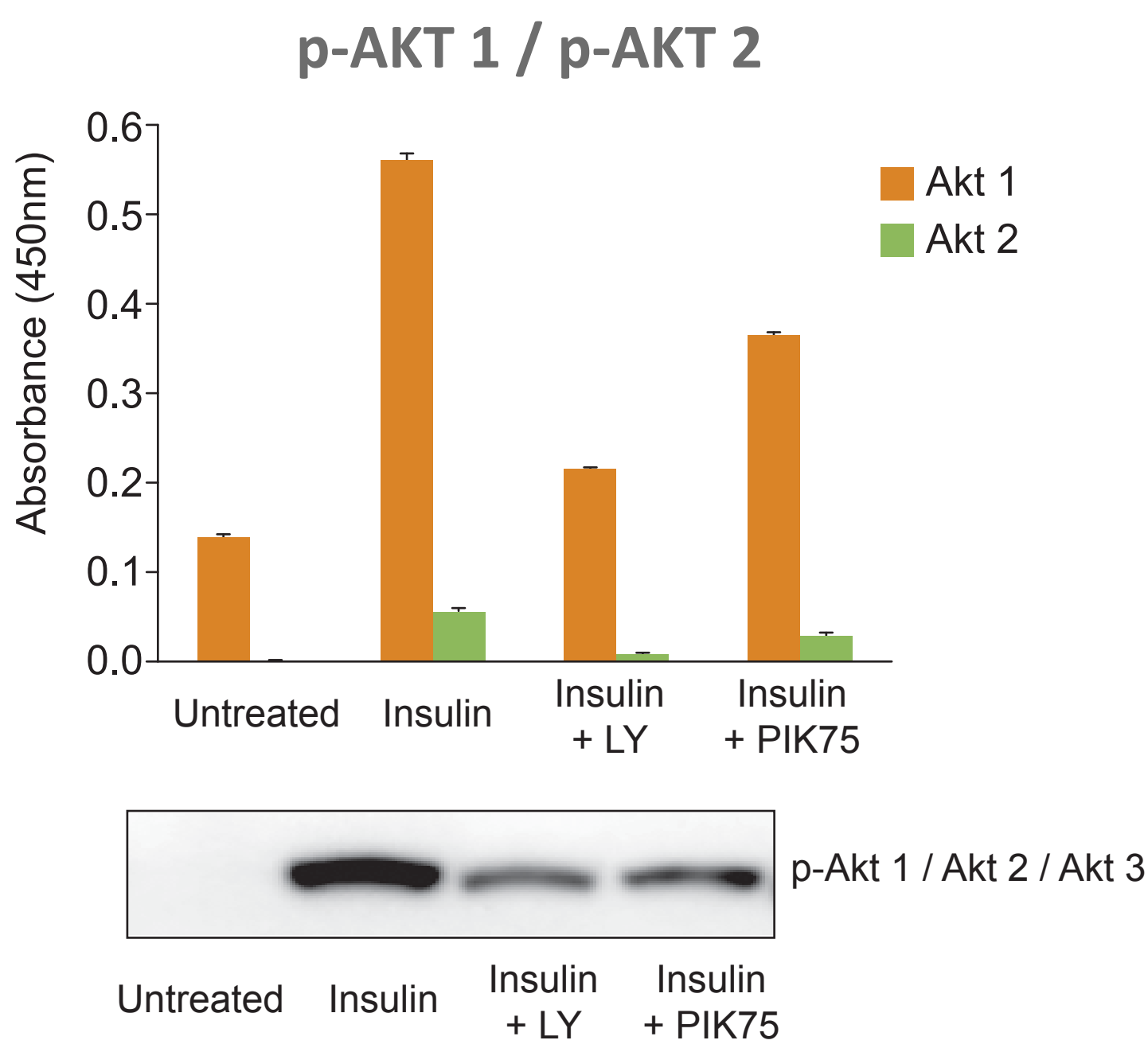
	p-Akt 1 (S473)	p-Akt 2 (S474)	p-ERK 1 (T202) (Y204)	p-GSK3α (S21)	p-GSK3β (S9)	p-p38α (T180) (Y182)	p-ERK 2 (T183) (Y185)
A	Red	Green	Blue	Orange	Yellow	Pink	Purple
B	Red	Green	Blue	Orange	Yellow	Pink	Purple
C	Red	Green	Blue	Orange	Yellow	Pink	Purple
D	Red	Green	Blue	Orange	Yellow	Pink	Purple
E	Red	Green	Blue	Orange	Yellow	Pink	Purple
F	Red	Green	Blue	Orange	Yellow	Pink	Purple
G	Red	Green	Blue	Orange	Yellow	Pink	Purple
H	Red	Green	Blue	Orange	Yellow	Pink	Purple

- Representative diagram of the 7 target phospho-proteins currently available
- Ready-to-use reagents with convenient room temperature protocol
- Flexibility to run any combination on one plate
- Colour-coded strips to avoid errors

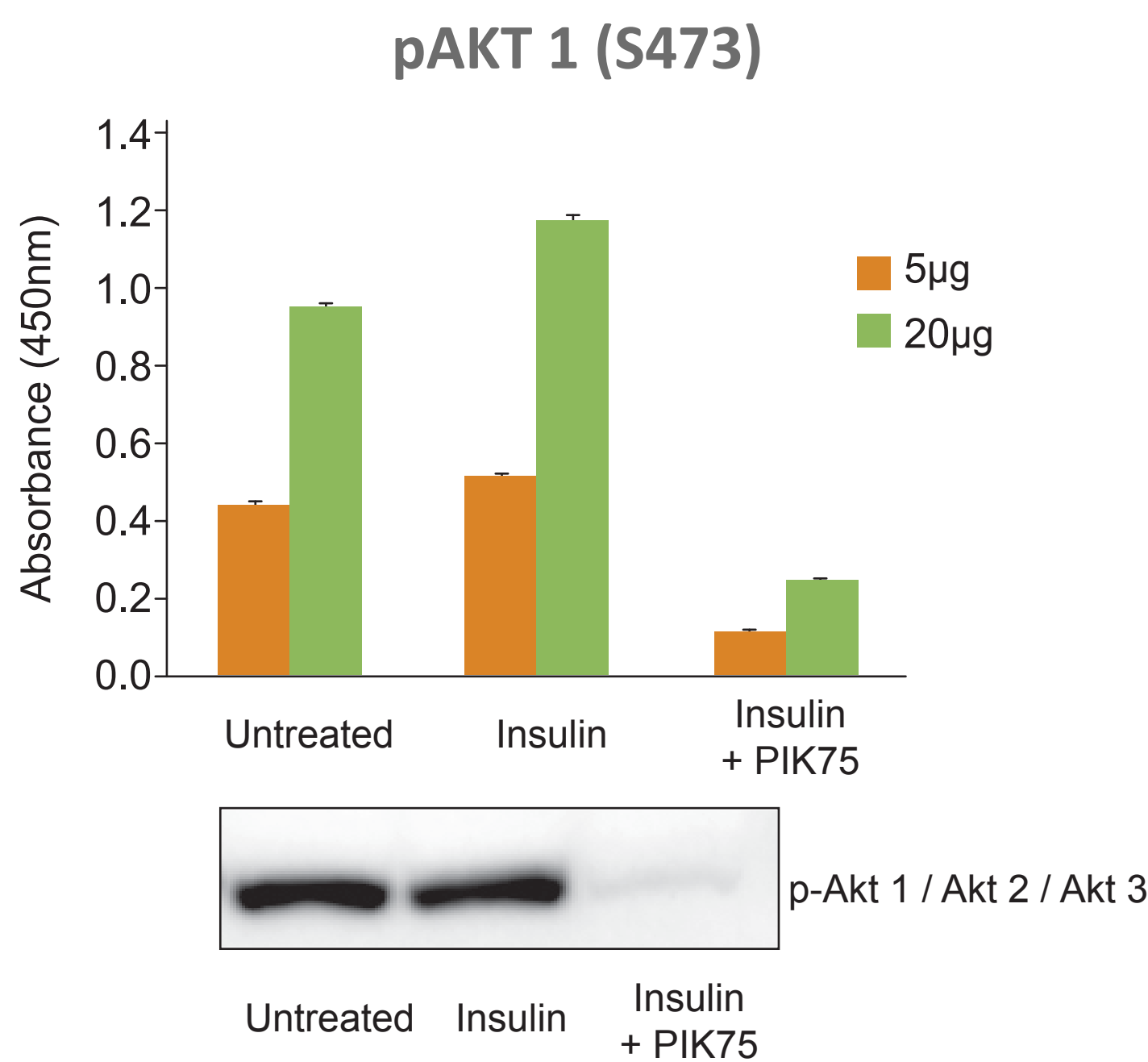


EXAMPLES FROM INDEPENDENT TESTING

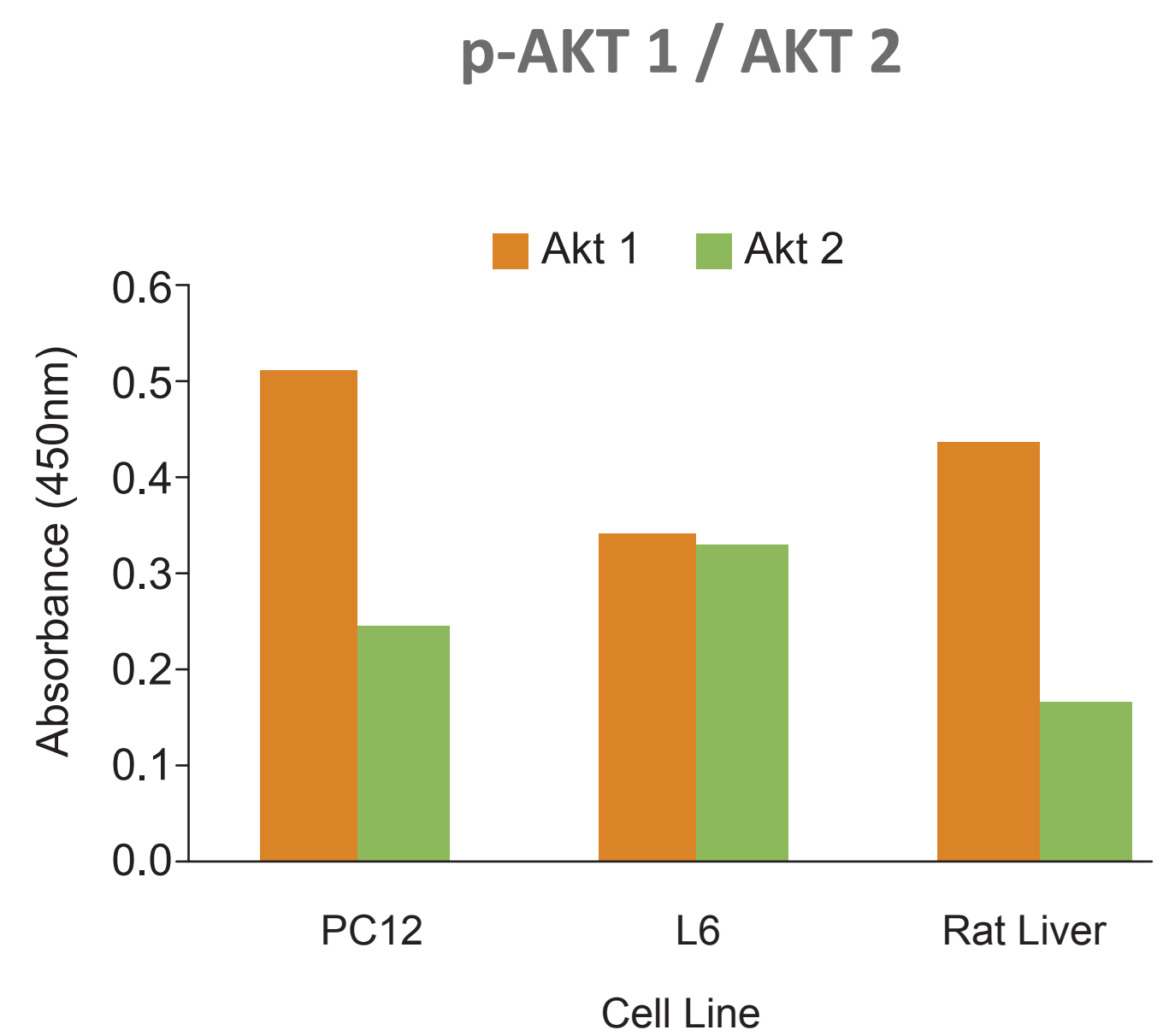
AKT 1 AND AKT 2; ELISA AND WESTERN BLOT RESULTS FROM THE SAME LYSATES



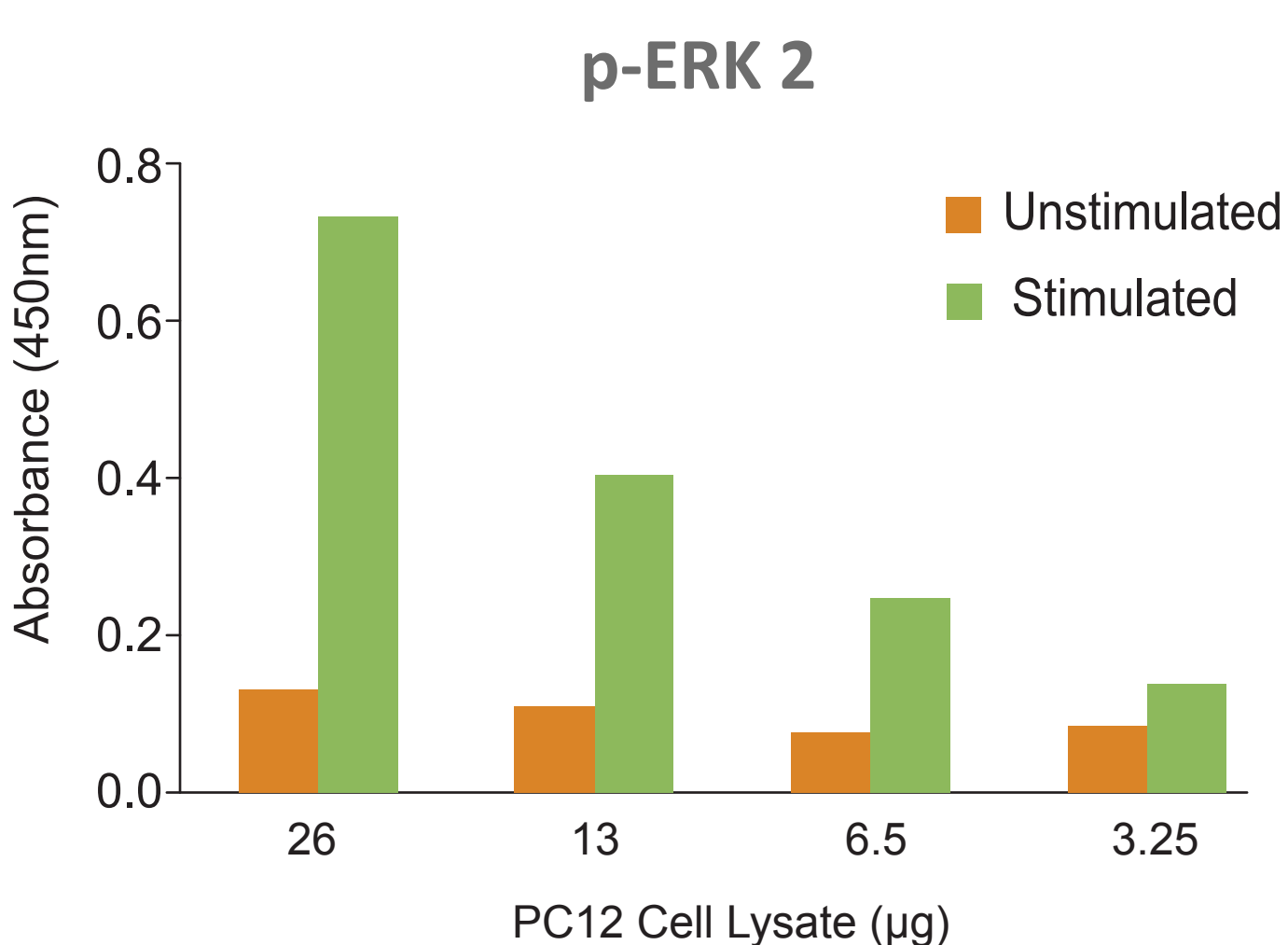
ELISA shows that Akt 1 is preferentially phosphorylated by insulin treatment of L6 muscle cells



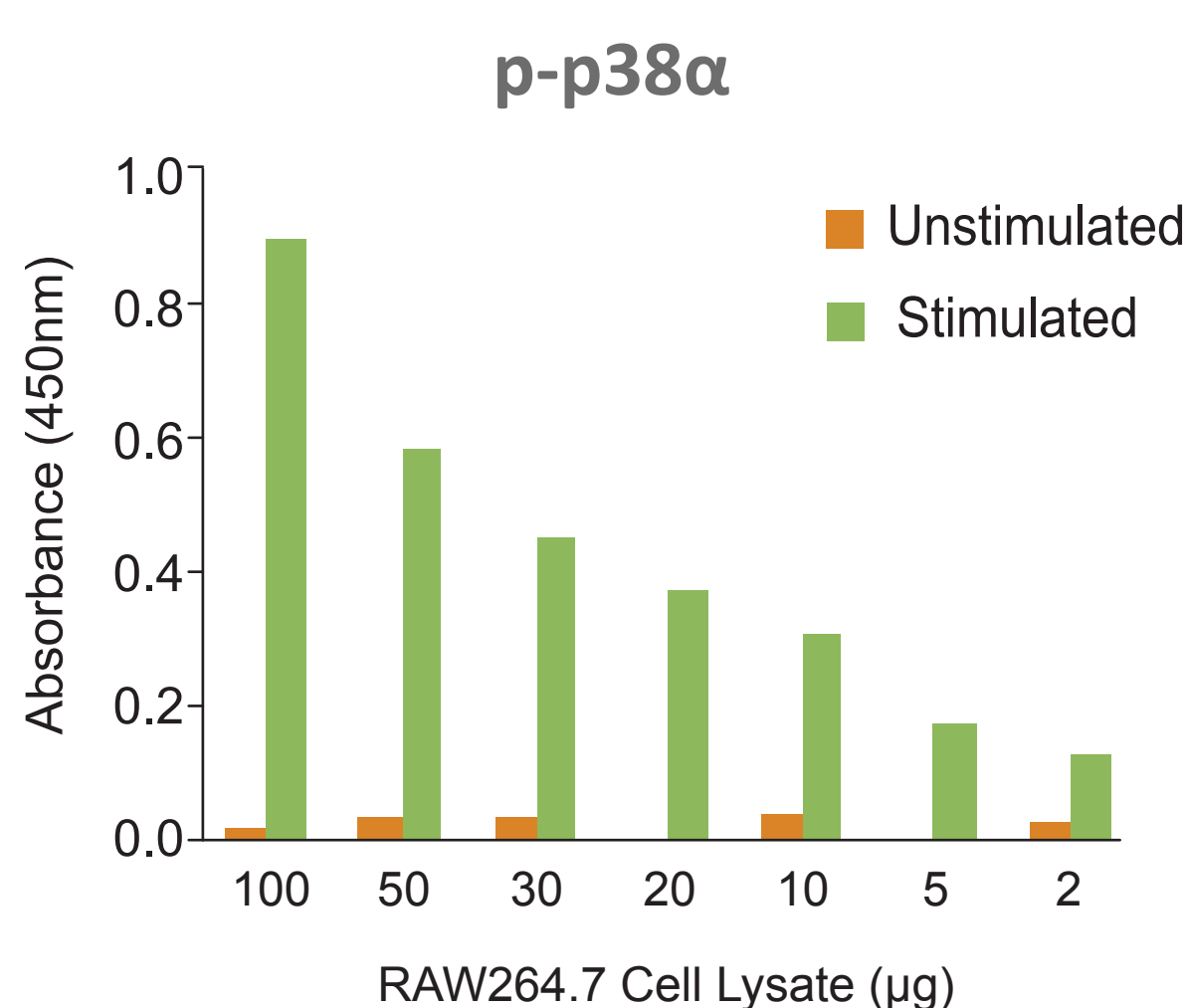
Stimulation of CHO-IR cells with insulin and inhibition with PIK75



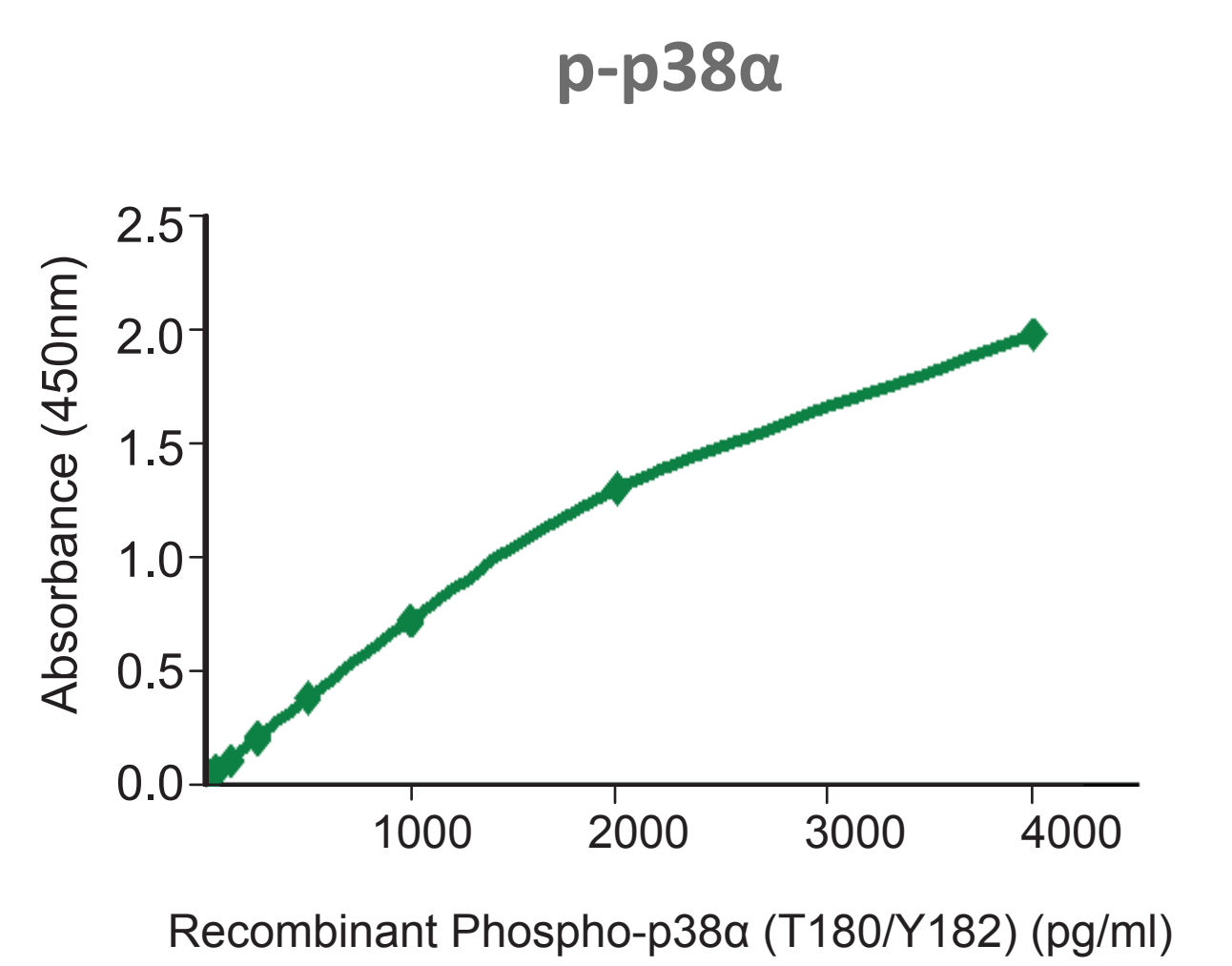
Differential activation of Akt in distinct cell lines



NGF treated and untreated PC12 cells



LPS treated and untreated RAW264.7 cells



Recombinant protein titration curve

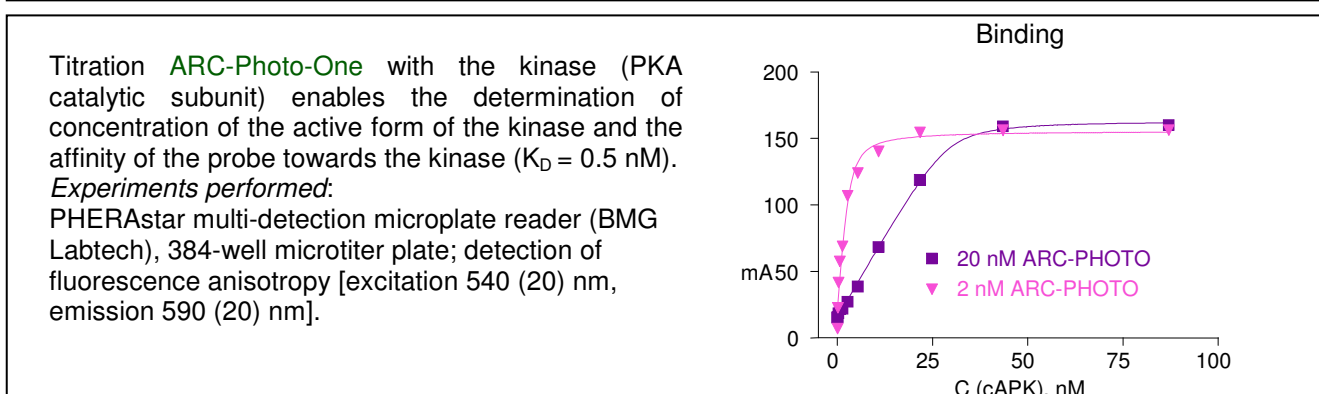
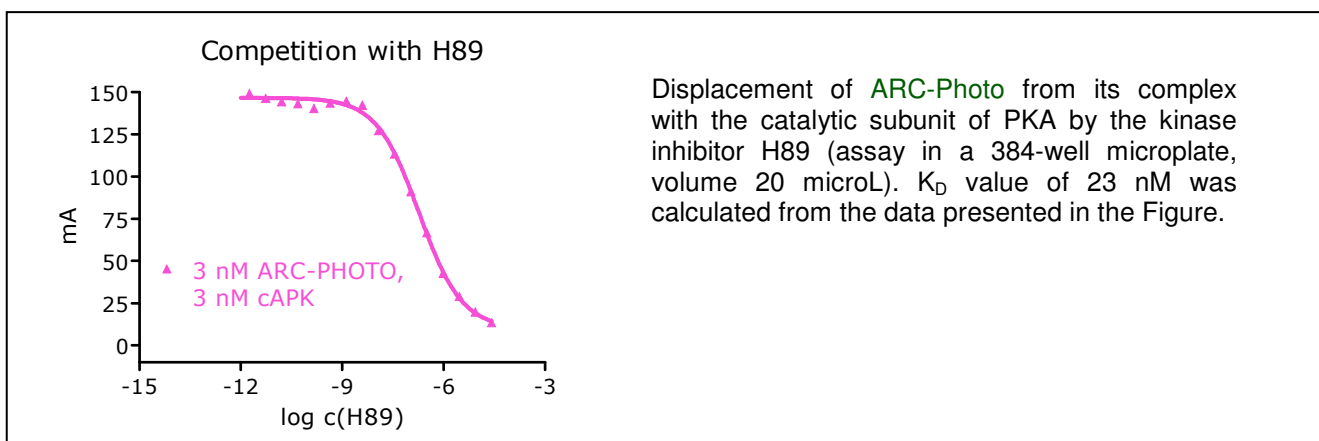
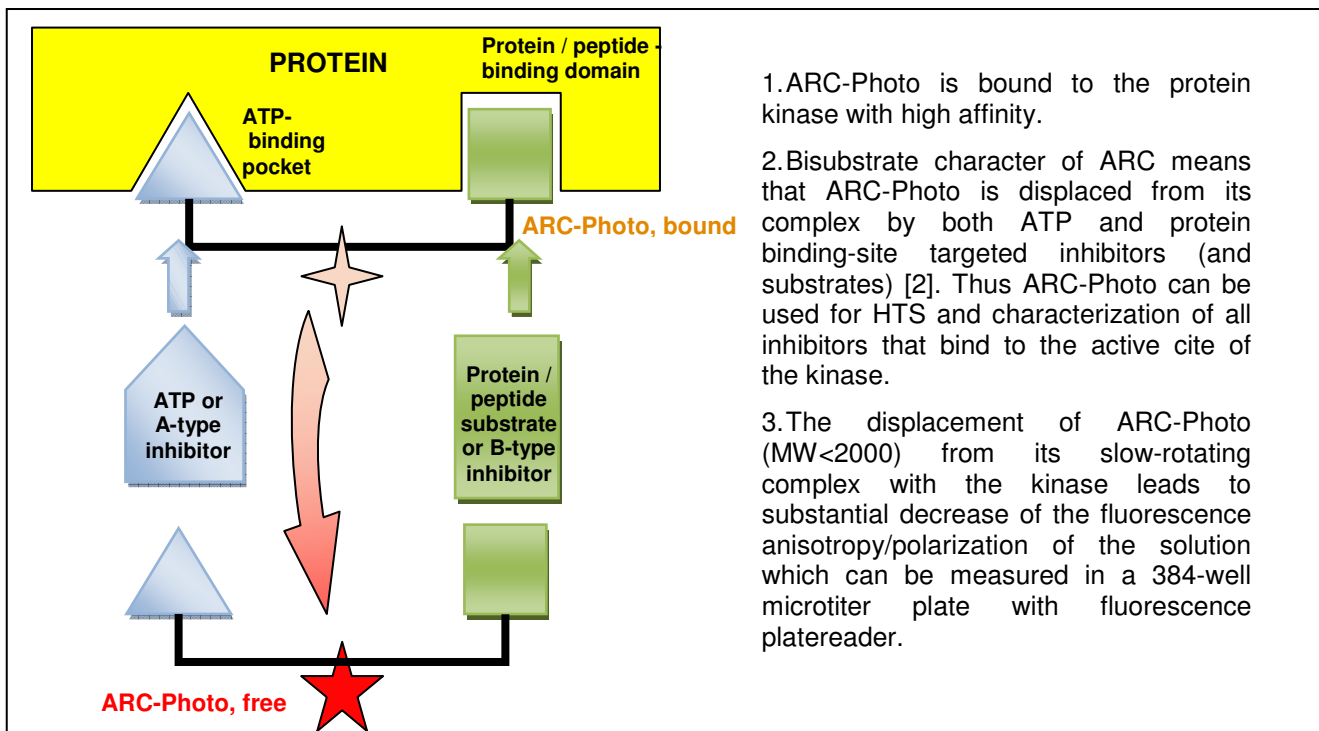
Rapid, High Sensitivity Affinity Readouts in a Homogenous Kinase Displacement Assay -- ARC Photo FP

Fast Results in 30-60 minutes **Easy** Just mix and read, **No** substrates, **no** antibodies, **no** ATP, **no** radioactivity, **no** separation
Economical Use: Low concentrations of the probe (< 5 nM) and the kinase (< 5 nM); low reaction volume (< 30 microL per 384- microtiter plate well format)
Multi Purpose: Screen unknown, mutant, non-active kinases, competitive substrates, inhibitors. See below for the currently accessible range.
Determine concentration of your (active subset of the) kinase, the **inhibitor strength** and **affinity** (binding strength) at **affordable costs**, a precious advantage under cost pressure.

This is not a kinetic assay.

Target	Specified Subclass	Verified
Proteinkinase A		↑
Proteinkinase B		↑
ROCK II		↑
P70S6K		↑
Proteinkinase C	alpha, beta, gamma	↑
	delta, epsilon	↑
	eta, mu, theta	↑
	iota, zeta	pending
Proteinkinase	D3	↑
Kit includes photosubstrate, internal control, buffers, 2 x 384 well plates, kit insert. # E8000		
Available Now-Ask for your quote		

More Kinase Assays for Profiling & PI3 Kinase Inhibitors: www.symansis.com

Scheme

References:

- [1] E. Enkvist et al. Conjugation of Adenosine and Hexa-(D-arginine) Leads to a Nanomolar Bisubstrate-Analog Inhibitor of Basophilic Protein Kinases. *Journal of Medicinal Chemistry*, (2006) 49(24), 7150-7159.
- [2] K. Viht et al. SPR-based biosensor with immobilized bisubstrate analog inhibitor for the determination of affinities of ATP- and protein-competitive ligands of cAMP-dependent protein kinase, *Analytical Biochemistry*, (2007) 362(2), 268-277.

New Assays:

Cardiac or Liver Function, Acute Phase, Diabetes, Metabolic Syndrome

Cat#	Description	Comment	Type	Size
E1000	Albumin, human		ELISA	2x96
E1002	Glycosyl Albumin, human		ELISA	1x96
E1004	Albumin, rat		ELISA	1x96
E1006	Glycosyl Albumin, rat		ELISA	1x96
E1007	Albumin, mouse		ELISA	1x96
E1008	ApoB:LDL, human		ELISA	1x96
E1010	Glyco_ApoB, human		ELISA	1x96
E1224	Obestatin, mouse&rat		ELISA	1 x 96
MKA 001	Multi ELISA Array	Kinase Profiler	Qual ELISA	8 x 12
K 1200	Hyaluronic Acid		ELISA	1 x 96
E1214	Polyethylene Glycol	Methoxy-PEG	ELISA	2 x 96

Cat#	Description	Comment	Type	Size
E1200	rat Vitamin D Binding Protein		ELISA	2 x 96
E1202	rat Murinoglobulin		ELISA	2 x 96
E1204	rat clusterin		ELISA	2 x 96
E1206	rat CRP	extended range	ELISA	2 x 96
E1208	rat AGP-1		ELISA	2 x 96
E1210	mouse CRP		ELISA	2 x 96
E1212	mouse haptoglobin		ELISA	2 x 96
E1216	mouse FABP (liver)		ELISA	2 x 96
E1218	rat FABP (liver)		ELISA	2 x 96
E1220	mouse /rat skeletal MLC		ELISA	2 x 96
E1222	rat cardiac TN 1		ELISA	2 x 96

New One-Step Assays for Diabetes Research Symansis (human)

ERBPSY h Retinol Binding Protein 4 1 x 96 wells

https://www.symansis.com/product_sheets/160.pdf

EPAISY h PAI-1 1 X 96 wells

https://www.symansis.com/product_sheets/159.pdf

E9510SY h Adiponectin 1 x 96 wells

https://www.symansis.com/product_sheets/147.pdf

ELCNSY h Lipocalin-2 1 x 96 wells (inqu)

Please fax 49-6195-674722 or email *info at artimmun.eu*

Salutation-----Title-----
First Name----- Surname-----
Institution-----
Department-----
Building /Room #------
Street /P O Box-----
Zip Code / City-----
Country -----
Contact requested under Tel: -----e-mail: -----

I do work with / should like to receive information about the following tools

Antibody Analytics

△ Artimmun Primary Antibodies
△ Western Blot △ IHC △ FACS
△ Posttranslational Modification
△ **Secondary antibodies & conjugates**
△ ELISA systems for human and animal derived samples
△ Micro Assays △ Proteomics △ **NEW** Multi Kinase ELISA

Raw Material for R&D plus Manufacturing

△ Non-animal Protein Sources △ Recomb. Prot.Sources
△ Proteins & Sera for [Embryonic] tissue culture
△ Human Glycosylated Fusion Proteins
△ Proteins and Sera for Assay Manufacturing

Cellular Analytics

△ Histone-Modification, Kinases

Equipment:

△ **Multiblock Tissue Arrayer** △ **Evaluation Software**

△ **New** Methyltransferases & Nucleases △ **Kinase Inhibitors** △ Capella Imager Array Reader

△ Special request for : (antibody, recombinant protein)

Through our cooperation with AlphaScience GmbH www.alphascience.de

△ IVD Clinical Chemistry

△ Infectious Disease Monitoring