

**Anti-h ERG1 S5-P (monoclonal)**

**Product E80M-G1S5**

**Source:** mouse Clone: A12 - - **Quantity:** 300 ul  
**Isotype:** IgG2b ( ELISA);

**Price: 480,00 €**

**Formulation:** ascitic fluid;

**Storage stability:** +4°C or -20°C.

Avoid freeze/thaw cycles.; shipped on: blue Ice pack

**Immunogen:**

14 aa synthetic peptide corresponding to the extracellular loop S5-P of the h ERG1 protein, (residues 575-588; Access Number NM 000238).; **sequence:** EQPHMDSRIGWLHN.

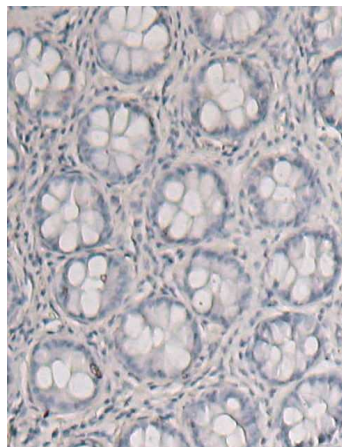
**Reactivity confirmed:** human.

**Applications :**

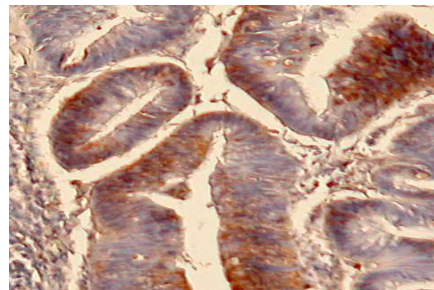
Immunohistochemistry (1:50/1:200);  
**Immunofluorescence** (1:50/1:200),

**Flow Cytometry** (1:2/1:50);  
**Immunoprecipitation** (2-5 µl)

**Colon Mucosa**

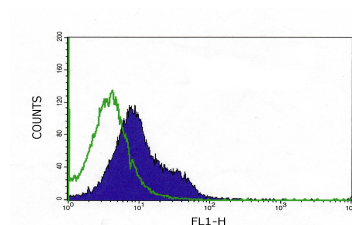


**Adenocarcinoma**



**Flow Cytometry**

FACS analysis of live intact HEK293-hERG1 transfected cells. In green HEK293-hERG1+ Goat-ant-Mouse-FITC; in blue HEK293-hERG1+anti HERG1 extracellular+ Goat-anti-Mouse-FITC. Dilution (1:10).



**Rabbit-anti-h ERG1 (C-terminus), Polyclonal Product E80P-G1**  
**[Ether-a-go-go related protein 1, pan-ERG1]**

**Host:** rabbit.      **Quantity:** 100µl      **Price :** 320,00 €

**Formulation:** Liquid, whole serum

**Immunogen:**  
GST fusion protein corresponding to aa 1106-1158 of h ERG1 protein.

**Specificity:**  
human and mouse C-terminal epitope of h ERG1  
**Recognizes both isoforms h ERG1A and h ERG1B.**

**Confirmed Cross-reactivity:** Human and mouse

**Application:**  
Immunohistochemistry on **paraffin** and      Western Blot (1:1000)  
frozen sections (1:100 - 1:400)      FACS (1:1000)  
Immunocytochemistry (1:100 - 1:200)

**Published in:**  
E. Lastraioli et al.: Cancer Research, 64, 606, 2004.  
A. Cherubini et al.: Mol. Biol. Cell, 16, 2972, 2005.  
A. Masi et al.: Br. J. Cancer, 93, 781, 2005.  
L. Guasti et al.: J. Comp. Neurol., 491, 157, 2005.

**Related antibodies: h ERG1a N-Terminus; h ERG1b , h ERG 2, h ERG 3**  
**100 uL each at 320,00 €**      Inquire for details